



**DEPARTMENT OF FINANCE**

**PROCUREMENT SERVICES**

95 Rochford Street, 2<sup>nd</sup> Floor South, Shaw Building, Room 27

Charlottetown, PEI, C1A 7N8

Telephone: (902) 368-4040 or Facsimile (902) 368-5171

**ADDENDUM #3**

**For RFP #6284**

**TO: All Bidders**

**FROM: Procurement Services**

**DATE: May 31, 2024**

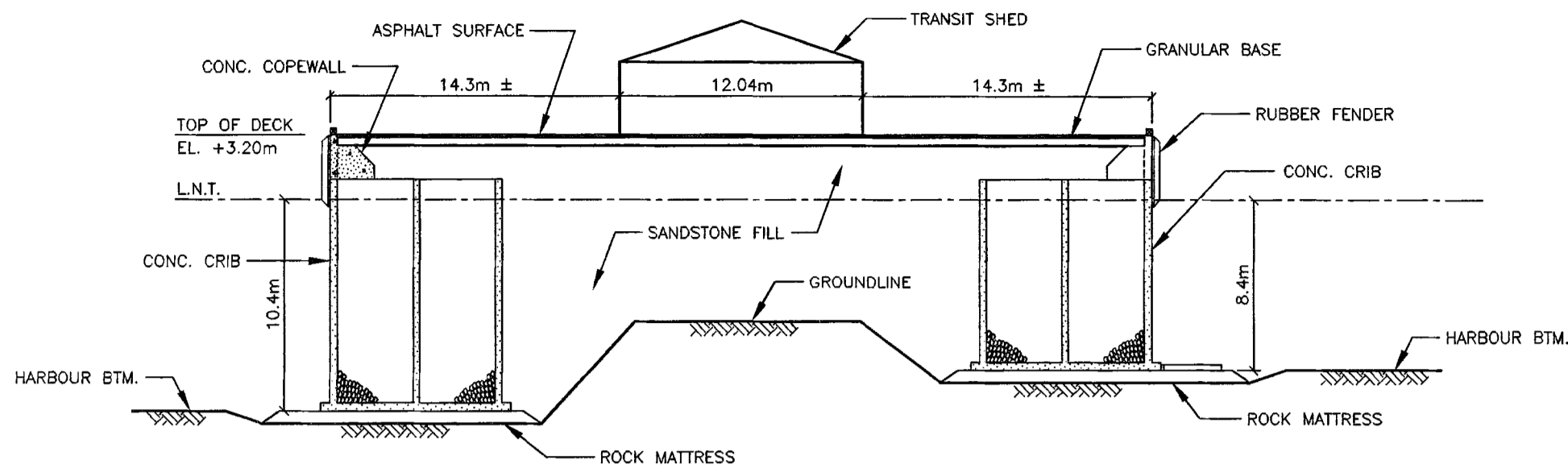
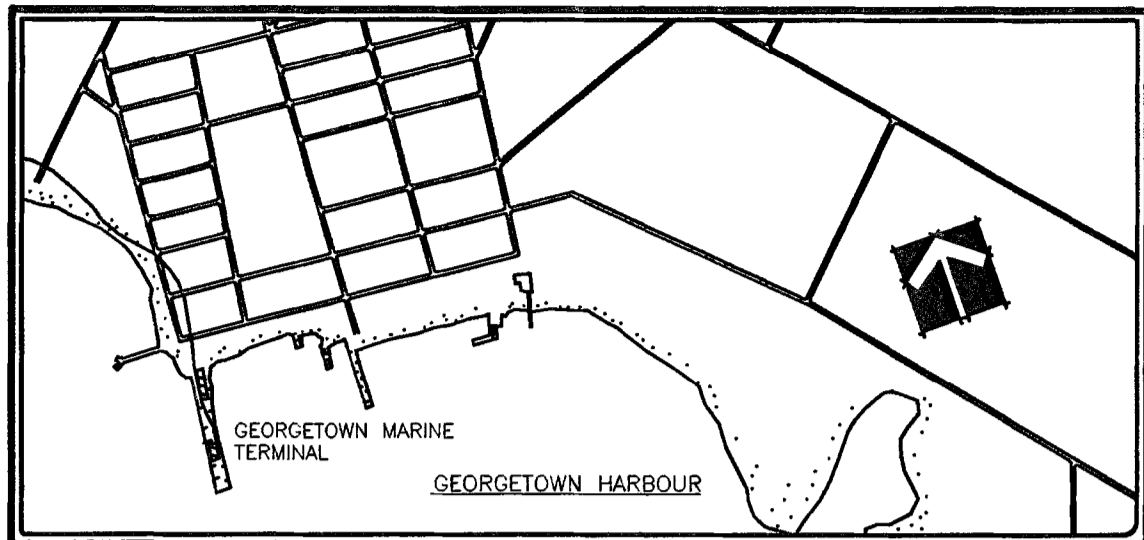
**SUBJECT: Clarification – Additional Information on Marine Terminal**

---

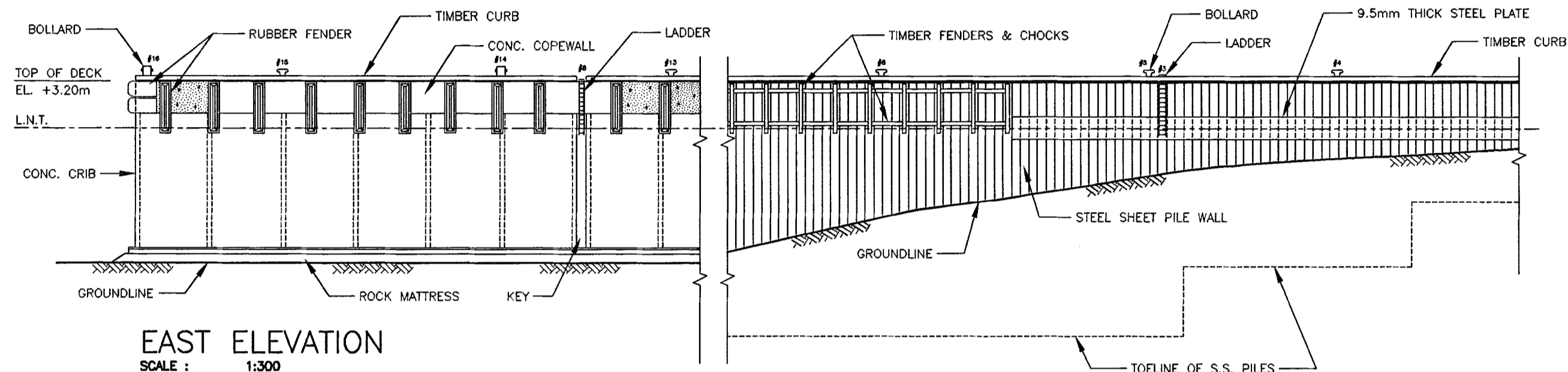
**Additional technical information available in relation to the Georgetown Marine Terminal – Delivery destination for Enercon E-138 Turbines in June 2025. See PDF below.**

**END OF ADDENDUM.**

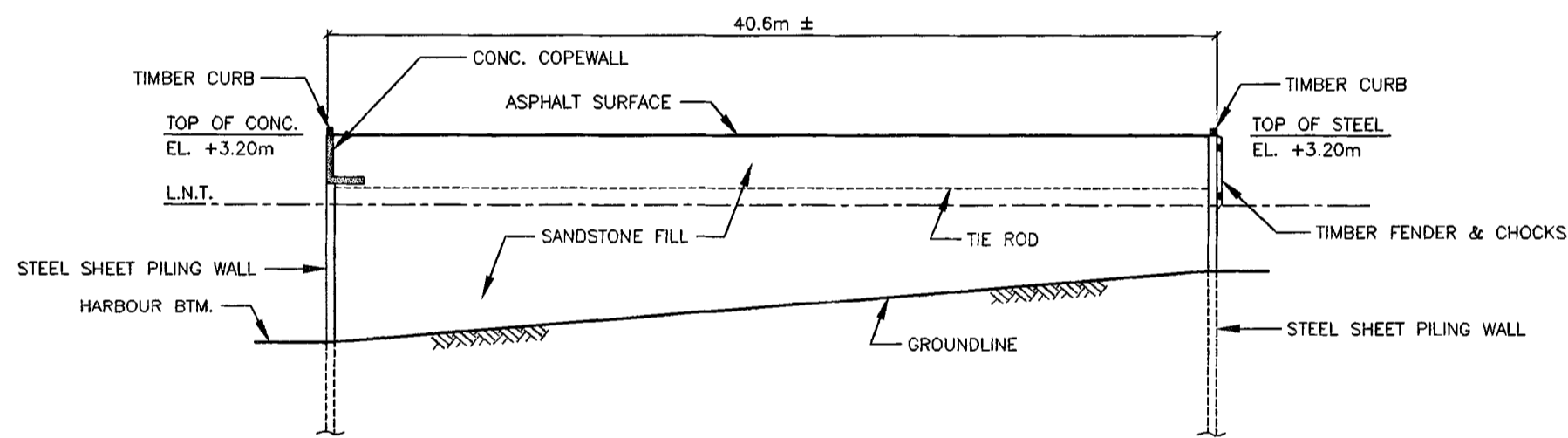
Please return this sheet with your formal bid proposal.



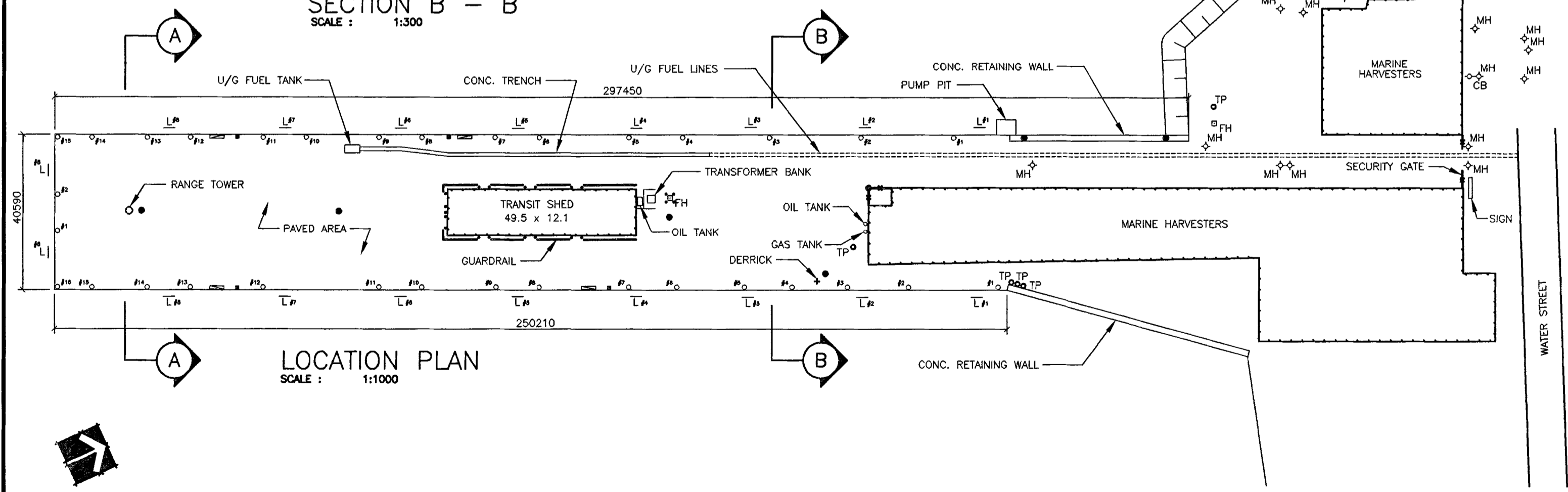
SECTION A - A  
SCALE : 1:300



EAST ELEVATION  
SCALE : 1:300



SECTION B - B  
SCALE : 1:300



LOCATION PLAN  
SCALE : 1:1000

## PORT ASSET PLAN DESCRIPTION

- A THIS WHARF IS LOCATED AT GEORGETOWN KING'S COUNTY, PRINCE EDWARD ISLAND LONG. 62° 32' 12" W LAT. 48° 10' 42" N
- B THE WHARF IS 152.78m LONG AND 40.95m WIDE CONCRETE CRIB STRUCTURE AND 144.97m WIDE SSP STRUCTURE. IT IS CONSTRUCTED OF ELEVEN FULLY BALLASTED REINFORCED CONCRETE CRIBS COMPLETE WITH CONCRETE COPE WALL RESTING ON A CRUSHED ROCK MATTRESS AND STEEL SHEET PILE WALLS ANCHORED BY STEEL TIE RODS. THE SURFACE OF THE STRUCTURE CONSISTS OF ASPHALTIC CONCRETE PAVEMENT.
- C THE APPROACH CONSISTS OF A PAVED ROAD CONNECTING THE PUBLIC WHARF TO WATER STREET.
- D THERE IS A LIGHTING, POWER AND WATER SUPPLY SYSTEM ON THE WHARF.
- E THE LIMIT LOAD IS MS 250 U.D.L.38.5 KN/M3
- F SERVICE SHROUDS ON THE WHARF CONTAIN:  
3# 240V. 100A  
3# 600V. 200A  
1# 240V. 100A  
TELEPHONES  
G.F.I. 15A RECEPTACLES
- G TRANSIT SHED GROSS AREA = 595m2  
WAREHOUSE AREA = 485m2 PLUS OFFICE AREA 110m2  
A PRE-ENGINEERED STEEL BUILDING WITH A CONCRETE FLOOR SLAB SUPPORTED ON A CONCRETE WALL AND FOOTING FOUNDATION.  
OFFICE AND WAREHOUSE AREAS HAVE A SEPERATE FORCED AIR HEATING SYSTEM.
- H THE CONCRETE CRIB COPEWALLS OF THE WEST, EAST AND SOUTH BERTH HAVE RUBBER TRAPEZOIDAL FENDERING SYSTEM. THE SSP BULKHEAD SECTION HAS A SUSPENDED RUBBER TIRE FENDERS.

### LEGEND:

- LIGHT STANDARD
- BOLLARD
- <sub>CB</sub> CATCH BASIN
- ◇<sub>MH</sub> MANHOLE
- ┌ LADDER
- ▭ SERVICE CENTRE ( ELECTRICAL )
- ▭ SERVICE CENTRE ( WATER )
- ▭<sub>FH</sub> FIRE HYDRANT

## CANADIAN COAST GUARD PORT FACILITY

GEORGETOWN  
MARINE TERMINAL  
KING'S CO. P.E.I.

### PLAN AND DESCRIPTION

CHARLOTTETOWN, P.E.I. ----- 1995

P.W.C. DISTRICT MANAGER, MARINE

CHECKED BY -