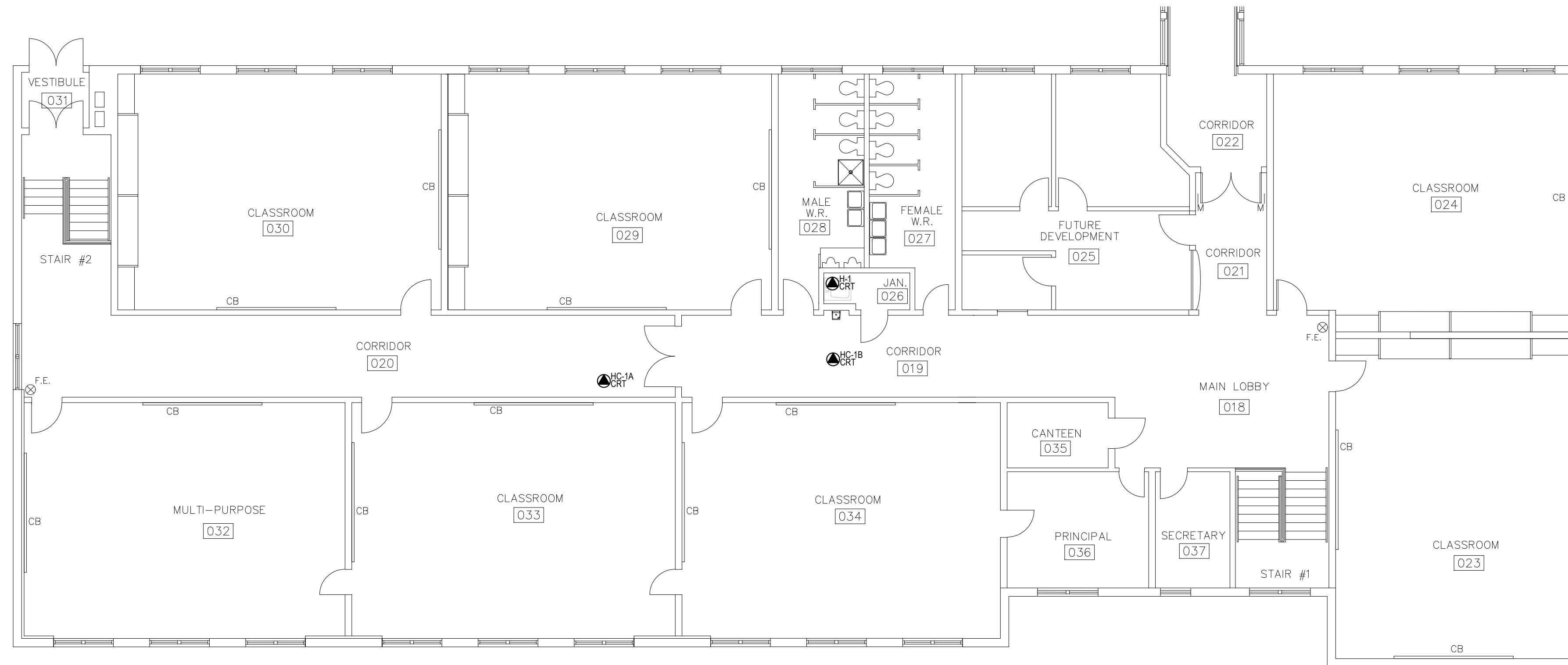


1 LOWER LEVEL ELECTRICAL PLAN
E1 SCALE: 1:100



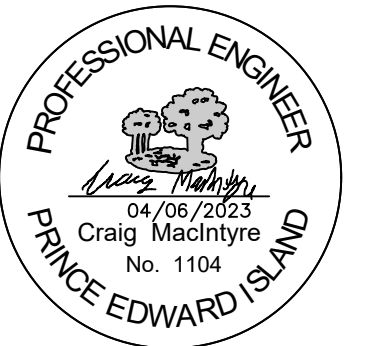
2 UPPER LEVEL ELECTRICAL PLAN
E1 SCALE: 1:100

GENERAL DEMOLITION NOTES
DISCONNECT, REMOVE AND DISPOSE OF ALL ABANDONED WIRING AND CONDUIT.

LEGEND	
SYMBOL	DESCRIPTION
	THREE PHASE MOTOR AS NOTED
	SINGLE PHASE MOTOR AS NOTED
	DIRECT CONNECTION
	DUPLEX RECEPTACLE 15A 125V, COMMERCIAL SPECIFICATION GRADE, MOUNTED AT 18" AFF COMPLETE WITH OFFICE WHITE NYLON FACE AND COVERPLATE. HUBBELL #BR150W OR EQUAL BY LEVITON.
	WEATHERPROOF ROOF-TOP DUPLEX RECEPTACLE 20A 125V, COMMERCIAL SPECIFICATION GRADE, INSTALLED NO LESS THAN 30" ABOVE FINISHED ROOF. CMW GROUND FAULT INTERRUPTER PROTECTION, CLASS A AND WEATHERPROOF, IN-USE TYPE COVER PLATE.

EQUIPMENT TAG	DESCRIPTION	MOTOR		MOTOR STARTER/CONTROL								CONNECTION	BREAKER SIZE	DISCONNECT SWITCH	NOTES	
		HP (HP)	VOLTS	MANUAL	TOGGLE SWITCH	MAGNETIC FVNR	COMBINATION FVNR	VFD	TR							
ERV-1	ENERGY RECOVERY VENTILATOR	208	3	7.2									DIRECT		WP/UF	
ERV-2	ENERGY RECOVERY VENTILATOR	208	3	7.2									DIRECT		WP/UF	
HC-1A	ELECTRIC HEATING COIL	7	208	3									DIRECT		UF	
HC-1B	ELECTRIC HEATING COIL	6	208	3									DIRECT		UF	
HC-2A	ELECTRIC HEATING COIL	6	208	3									DIRECT		UF	
HC-2B	ELECTRIC HEATING COIL	4	208	3									DIRECT		UF	
H-1	HUMIDIFIER	6	208	3									DIRECT		UF	
H-2	HUMIDIFIER	6	208	3									DIRECT		UF	
WS-1	WATER SOFTNER	120	1										NEMA 5-15R			
P-1	CONDENSATE PUMP	1/80 HP	120	1									NEMA 5-15R			

NOTE: E = SUPPLIED AND INSTALLED BY ELECTRICAL CONTRACTOR VFD = VARIABLE FREQUENCY DRIVE UF = UNFUSED HP = WEATHERPROOF M = SUPPLIED AND INSTALLED BY MECHANICAL CONTRACTOR ME = SUPPLIED BY MECHANICAL CONTRACTOR, INSTALLED BY ELECTRICAL CONTRACTOR TR = REVERSE ACTING THERMOSTAT

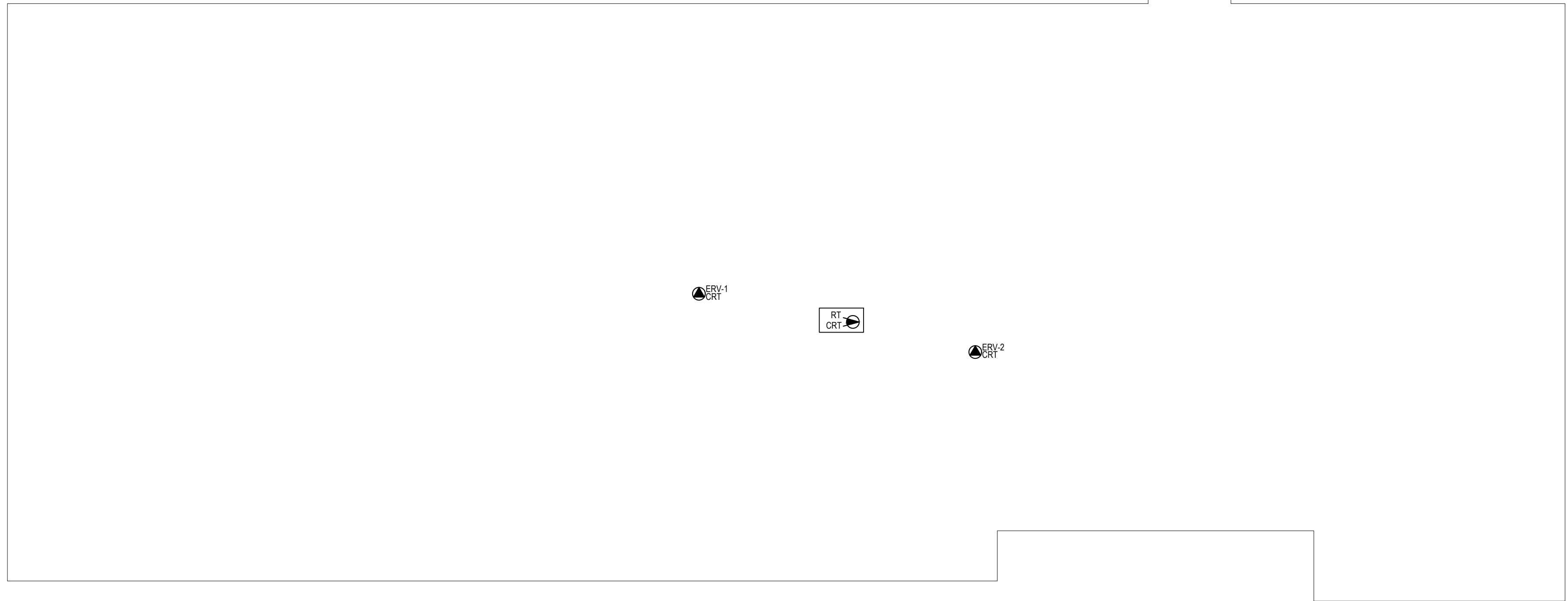


A = Detail #
BB = Sheet # (Where Detail Required)
CC = Sheet # (Where Detailed)

Project Title :
PARKDALE ELEMENTARY SCHOOL VENTILATION UPGRADE

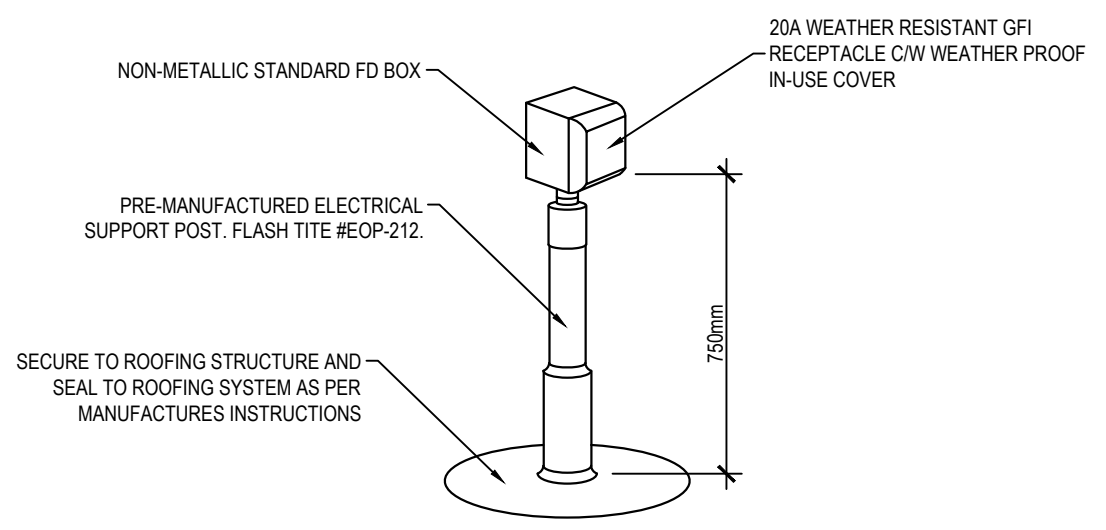
Drawing Title :
LOWER LEVEL & UPPER LEVEL ELECTRICAL PLANS

Scale : AS NOTED Design By : CM
Drawn By : PS Date : April 6, 2023
Project No. : 430-21043 Drawing # : E1 of 2



1 ROOF PLAN
E2 SCALE: 1:100

NOTE:
MOUNT RECEPTACLE IN A LOCATION THAT WILL NOT INTERFERE WITH THE MECHANICAL EQUIPMENT FOR SERVICE ACCESS.



THESE RECEPTACLES MUST BE LOCATED WITHIN 7.5m OF ALL ROOF MOUNTED MECHANICAL EQUIPMENT. IT MUST BE MOUNTED NOT LESS THAN 750mm ABOVE THE FINISHED ROOF AND PROTECTED FROM MECHANICAL DAMAGE.

1 ROOFTOP OUTLET DETAIL
E2 SCALE: NTS

26.05.00 - COMMON WORK RESULTS ELECTRICAL

EXAMINATION OF SITE AND CONDITIONS
1) EXAMINE THE SITE AND LOCAL CONDITIONS AFFECTING THE WORK WITH ALL TENDER DOCUMENTS, TO ENSURE THE WORK CAN BE SATISFACTORILY PERFORMED AS SHOWN. PRIOR TO COMMENCING WORK, EXAMINE THE WORK OF OTHER DIVISIONS AND REPORT AT ONCE ANY DEFECT OR INTERFERENCE AFFECTING THE WORK OF THIS CONTRACTOR. NO ALLOWANCE WILL BE MADE LATER FOR ANY EXPENSES INCURRED THROUGH FAILURE TO MAKE THIS EXAMINATION OR TO REPORT ANY DISCREPANCIES IN WRITING.
2) THIS CONTRACTOR IS TO ATTEND ALL SITE MEETINGS PRIOR TO CLOSE OF TENDER TO CONFIRM SCOPE OF WORK.

BY-LAW AND REGULATIONS
1) CONFORM WITH LATEST RULES, REGULATIONS AND DEFINITIONS OF THE CANADIAN ELECTRICAL CODE, APPLICABLE MUNICIPAL AND PROVINCIAL CODES AND REGULATIONS AND WITH REQUIREMENTS OF OTHER AUTHORITIES HAVING JURISDICTION IN THE AREA WHERE WORK IS TO BE PERFORMED.
2) STANDARDS ESTABLISHED BY DRAWINGS AND SPECIFICATIONS SHALL NOT BE REDUCED BY ANY CODES REFERRED TO ABOVE AND MINOR CHANGES REQUIRED BY AN AUTHORITY HAVING JURISDICTION SHALL BE PERFORMED WITHOUT CHANGE TO THE CONTRACT AMOUNT.

SAFETY REQUIREMENTS
1) CLEAN SITE AT REGULARLY SCHEDULED TIMES. LEAVE WORK CLEAN BEFORE INSPECTION PROCESS COMMENCES.
2) DO NOT LEAVE THE SITE IN DANGEROUS CONDITIONS, UNDER ANY CIRCUMSTANCES, DURING THE PROGRESS OF WORK.

CO-OPERATION AND RESPONSIBILITY
1) INCLUDE FULL RESPONSIBILITY FOR LAYOUT OF ELECTRICAL WORK, FOR DAMAGE CAUSED TO OTHER DIVISIONS OF WORK BY REASON OF IMPROPER LOCATION OR INSTALLATION OF WORK IN ADVANCE OF CONCRETE POURING OR SIMILAR WORK. FOR CONDITIONS OF ALL MATERIAL AND EQUIPMENT SUPPLIED UNDER THIS DIVISION AND FOR PROTECTION AND MAINTENANCE OF WORK COMPLETED AND ACCEPTED UNTIL TERMINATION OF CONTRACT.
2) CO-OPERATE WITH OTHER DIVISIONS TO ENSURE THAT ITEMS INSTALLED UNDER THIS DIVISION ARE LOCATED IN PROPER RELATION WITH BUILDING CONSTRUCTION, ARCHITECTURAL FINISHES AND WITH OTHER EQUIPMENT OR APPARATUS.

GUARANTEE
1) GUARANTEE MATERIAL AND WORKMANSHIP FOR A PERIOD OF ONE YEAR FROM DATE OF FINAL ACCEPTANCE BY ENGINEER, EXCEPT FOR INCANDESCENT LAMPS WHICH SHALL BE GUARANTEED FOR A PERIOD OF 90 DAYS FROM DATE OF FINAL ACCEPTANCE. ALL

DEFECTS SHALL BE CORRECTED AND MADE GOOD DURING THIS PERIOD EXCEPT DEFECTS OCCURRING FROM MISUSE BY OWNER.

PERMITS FEES AND CERTIFICATES
1) FILE CONTRACT DRAWINGS WITH PROPER AUTHORITIES AND OBTAIN APPROVAL OF INSTALLATION AND PERMITS FOR THE WORK. PREPARE AND SUBMIT NECESSARY DETAIL SHOP DRAWINGS AS REQUIRED BY AUTHORITIES.
2) PAY ALL FEES IN CONNECTION WITH EXAMINATION OF DRAWINGS, FOR PERMITS, INSPECTIONS AND FINAL CERTIFICATES OF APPROVAL.
3) SUPPLY NECESSARY CERTIFICATES AS EVIDENCE THAT WORK AS INSTALLED CONFORMS WITH LAWS AND REGULATIONS OF ALL AUTHORITIES HAVING JURISDICTION.

EQUIPMENT SHOP DRAWINGS
1) PREPARE AND SUBMIT A MINIMUM OF SIX SHOP DRAWINGS OF ALL MAJOR ITEMS OF EQUIPMENT PRIOR TO EQUIPMENT FABRICATION, DELIVERY OR INSTALLATION. SHOP DRAWINGS SHALL INDICATE MANUFACTURER, CATALOGUE NUMBER, DIMENSIONS, SPECIAL FEATURES OR FINISHES.
2) SUBMIT SHOP DRAWING WITHIN (7) DAYS OF AWARD OF CONTRACT.
3) THE OWNER RESERVES THE RIGHT TO WAIVE APPROVAL DRAWINGS AND ACCEPT RECORD DRAWINGS, THIS IN NO WAY RELIEVES THE CONTRACTOR FROM SUPPLYING THE SPECIFIC EQUIPMENT.
4) THE CONTRACTOR SHALL BE RESPONSIBLE FOR CHECKING ALL SHOP DRAWINGS FOR ERRORS OR OMISSIONS TO CONFORM WITH ACCURACY REQUIREMENTS OF DIMENSIONS TO CONFORM WITH SITE CONDITIONS AND FOR INFORMATION THAT PERTAINS SOLELY TO EQUIPMENT FABRICATION PROCESSES.

AS BUILT DRAWINGS
1) THE CONTRACTOR SHALL MAINTAIN ON SITE ONE SET OF UP TO DATE AS BUILT DRAWINGS FOR REVIEW AT ALL TIMES. AT THE END OF THIS CONTRACT THE CONTRACTOR SHALL SUPPLY THE OWNER A COMPLETE SET OF AS BUILT DRAWINGS FOR HIS REVIEW AND ACCEPTANCE.
2) PROVIDE THREE (3) OPERATIONS AND MAINTENANCE MANUALS IN 3 POST BACK BINDER AT COMPLETION OF THE PROJECT. MANUALS SHALL CONTAIN A LIST OF SUPPLIERS INCLUDING TELEPHONE NUMBERS, SHOP DRAWINGS, FINAL ELECTRICAL INSPECTION CERTIFICATE, FIRE ALARM VERIFICATION, RECORD DRAWINGS, AND TEST REPORTS. EACH SECTION SHALL BE SEPARATELY TABBED. EACH PIECE OF EQUIPMENT REQUIRING ADJUSTMENT OR REGULAR MAINTENANCE SHALL HAVE CLEAR INSTRUCTIONS TO HOSE REQUIREMENTS.

COMPLETION
1) LEAVE ALL NEW AND RELOCATED EQUIPMENT CLEAN, FREE OF CONSTRUCTION DEBRIS AND OTHER FOREIGN MATTER. REMOVE ANY TEMPORARY OR PROTECTIVE COATINGS.

2) UPON COMPLETION OF THE WORK THE CONTRACTOR SHALL PROVIDE IN A TIMELY FASHION "AS BUILT" DRAWINGS, LETTER OF WARRANTY, OWNERS MANUAL AND WORKERS COMPENSATION CLEARANCE CERTIFICATE.

EQUIPMENT LOCATIONS
1) THE RIGHT IS RESERVED TO ALTER THE LOCATION OF EQUIPMENT AND OUTLETS AT DISTANCE OF UP TO TEN FEET (3 METERS) WITHOUT INVOLVING A CHANGE TO THE CONTRACT AMOUNT. PROVIDED NOTICE IS GIVEN PRIOR TO INSTALLATION OF SAME.
CONTRACT DRAWINGS
1) THESE DRAWINGS ARE INTENDED TO SERVE AS A GUIDE SHOWING QUANTITIES AND GENERAL ARRANGEMENTS AND ARE NOT NECESSARILY WORKING DRAWINGS FROM WHICH MEASUREMENTS CAN BE TAKEN, EXCEPT WHERE DIMENSION FIGURES ARE SPECIFICALLY SHOWN. INFORMATION INVOLVING ACCURATE MEASUREMENTS OF BUILDING SHALL BE TAKEN FROM BUILDING DRAWING OR FROM THE SITE.

MATERIAL
1) MATERIALS SUPPLIED BY THIS CONTRACTOR SHALL BE NEW, OF CANADIAN MANUFACTURE WHERE AVAILABLE AND OF FIRST QUALITY AND UNIFORM THROUGHOUT.
2) ALL ELECTRICAL MATERIALS SHALL BE CSA APPROVED AND LABELED AND ALL MATERIALS NOT APPROVED SHALL RECEIVE ACCEPTANCE FOR INSTALLATION BY SPECIAL APPLICATION TO CSA. MATERIAL SHALL NOT BE INSTALLED OR CONNECTED TO A SOURCE OF ELECTRICAL POWER UNTIL APPROVAL IS OBTAINED.

RETURN OF DRAWINGS
1) AT THE COMPLETION OF THE JOB, ALL DRAWINGS SHALL BE RETURNED, REGARDLESS OF THEIR CONDITION.

PLANS FOR RECORDING CHANGES
1) OBTAIN ONE SET OF WHITE PRINTS AND RECORD ON ANY ALTERATIONS OF THE ROUTING OF CONDUIT, WIRING AND ETC. OR SHOW ON THE CONTRACT DRAWINGS. THESE DRAWINGS TO BE KEPT UP TO DATE AND TURNED OVER AT THE COMPLETION OF THE PROJECT.

CLEANING UP
1) ALL REFUSE AND DEBRIS CAUSED BY THIS CONTRACTOR SHALL BE REMOVED FROM THE SITE AT FREQUENT INTERVALS. BEFORE THE WORK IS FINALLY ACCEPTED BY THE OWNER, THIS CONTRACTOR SHALL THOROUGHLY CLEAN ALL EQUIPMENT, APPARATUS AND FIXTURES AND LEAVE THEM IN PERFECT NEW CONDITION.

INSTRUCTIONS TO OPERATORS
1) INSTRUCT THE OWNER'S OPERATOR IN THE CARE AND MAINTENANCE AND OPERATION OF ALL ELECTRICAL SYSTEMS AND EQUIPMENT INSTALLED UNDER THE

SPECIFICATION
2) PREPARE THREE COPIES OF OPERATIONS AND MAINTENANCE INSTRUCTIONS, SHOP DRAWINGS, WIRING DIAGRAMS, DESCRIPTIVE LITERATURE FOR EACH ITEM OF EQUIPMENT SUPPLIED. COMBINE THESE TOGETHER IN LOOSE LEAF BINDERS.
3) THESE LOOSE LEAF BINDERS SHALL BE PRESENTED UPON COMPLETION OF THE PROJECT.

NAMERPLATES
1) ALL APPARATUS SHALL HAVE PROPER NAME PLATES AFFIXED THERETO, SHOWING SERIAL NUMBER, SIZE, NAME OF EQUIPMENT AND ALL INFORMATION USUALLY SUPPLIED, INCLUDING VOLTAGE, PHASE, HERTZ AND HORSEPOWER OF MOTORS AND THE NAME OF THE MANUFACTURER AND THEIR ADDRESS.

INSPECTIONS AND TESTING
1) ALL WORK SHALL BE LEFT OPEN FOR INSPECTION SO THAT INSPECTION MAY BE MADE BEFORE THE WORK IS COVERED.

LOAD BALANCE
1) MEASURE PHASE CURRENT TO PANEL BOARDS WITH NORMAL LOADS OPERATING AT THE TIME OF ACCEPTANCE. ADJUST BRANCH CIRCUIT CONNECTIONS AS REQUIRED TO OBTAIN BEST BALANCE OF CURRENT BETWEEN PHASES.

FIRESTOPPING AND SMOKE SEALS
1) ALL FIRE STOPPING AND SMOKE SEALS REQUIRED TO PROPERLY ACCOMMODATE THE WORK OF THIS DIVISION SHALL BE THE FINANCIAL RESPONSIBILITY OF THIS THIS DIVISION, AND CARRIED OUT BY TRADES TO THE APPLICABLE UL/C APPROVED SYSTEM OF ONE OF THE APPROVED MANUFACTURERS PROVIDED IN THIS DOCUMENT. TRADES PERSONNEL MUST BE TRAINED BY THE MANUFACTURER AND PROVIDE DOCUMENTATION STATING SAME.
2) WHERE MATERIALS PASS THROUGH FIRE RATED WALLS, FLOOR AND PARTITIONS, A UL/C APPROVED FIRE STOPPING AND SMOKE SEAL SYSTEM SHALL BE USED TO MAINTAIN OR EXCEED THE FIRE SEPARATIONS RATING.
3) PROVIDE UL/C DRAWINGS FOR EACH SITE SPECIFIC PENETRATION
4) WORK MUST BE PERFORMED BY A COMPANY WITH EXPERIENCE IN THE APPLICATION OF FIRE STOPPING AND SMOKE SEALS TO UL/C REQUIREMENTS.
4) STANDARD OF ACCEPTANCE HILT AND TREMCO.

UTILITY SERVICES
1) THIS CONTRACTOR IS FINANCIALLY RESPONSIBLE TO PROVIDE COMPLETE ELECTRICAL, TELEPHONE AND COMPUTER SYSTEMS. THIS CONTRACTOR IS RESPONSIBLE TO COORDINATE WITH AND PAY FOR ALL UTILITY FEES.



Department of Transportation and Infrastructure
PO Box 2000
Charlottetown
Prince Edward Island
Canada C1A 7N8
Tel 902 368 5100
Fax 902 569 0590
http://www.gov.pe.ca/

A = Detail #
BB = Sheet # (Where Detail Required)
CC = Sheet # (Where Detailed)

Project Title :
PARKDALE ELEMENTARY SCHOOL VENTILATION UPGRADE

Drawing Title :
ROOF PLAN, DETAILS & SPECIFICATIONS

Scale :	AS NOTED	Design By :	CM
Drawn By :	PS	Date :	April 6, 2023
Project No.:	430-21043	Drawing # :	E2 of 2