

ENERGY RECOVERY VENTILATOR SCHEDULE																
TAG	MAKE	MODEL	SUPPLY		EXHAUST		SUPPLY SIDE		RETURN SIDE		HEATING EFFECTIVENESS	POWER		DIMENSIONS (LxWxH-MM)	OPTIONS	
			ESP (Pa)	AIRFLOW (L/S)	ESP (Pa)	AIRFLOW (L/S)	TEMP. BEFORE/AFTER (°C)	RH BEFORE/AFTER (%)	TEMP. BEFORE/AFTER (°C)	RH BEFORE/AFTER (%)		TEMP. BEFORE/AFTER (°C)	RH BEFORE/AFTER (%)			VOLTAGE
ERV-1	SYSTEMAIR	TOPVEX 3200 RT-EC	150	1250	100	1250	-22.0/11.3	80/45	21.1/12.4	30/95	78%	208V/3	7.2 MCA, 15 MOCIP	583.0	1700x1315x1390	C/W ROOF CURB, DDC STRIP FOR BMS CONNECTION, EC MOTORS, MOTORIZED DAMPERS, 7 DAY TIMER, FAN SHUTDOWN DEFROST, DISCONNECT
ERV-2	SYSTEMAIR	TOPVEX 3200 RT-EC	150	1050	100	1050	-22.0/12.1	80/45	21.1/9.4	30/90	80%	208V/3	7.2 MCA, 15 MOCIP	616.0	1700x1315x1390	C/W ROOF CURB, DDC STRIP FOR BMS CONNECTION, EC MOTORS, MOTORIZED DAMPERS, 7 DAY TIMER, FAN SHUTDOWN DEFROST, DISCONNECT

ELECTRIC HEATING COIL SCHEDULE							
TAG	MAKE	MODEL	AIRFLOW (L/S)	DUCT SIZE (MM)	CAPACITY (KW)*	VOLTAGE	OPTIONS
HC-1B	STELPRO	SDHX	558	450x300	6.0	208V/3	SCR MODULATION, C/W CIR-048, ELECTRONIC AIR VELOCITY SENSOR, SUPPLY DUCT TEMPERATURE SENSOR
HC-2A	STELPRO	SDHX	591	600x250	6.0	208V/3	SCR MODULATION, C/W CIR-048, ELECTRONIC AIR VELOCITY SENSOR, SUPPLY DUCT TEMPERATURE SENSOR
HC-2B	STELPRO	SDHX	456	500x250	4.0	208V/3	SCR MODULATION, C/W CIR-048, ELECTRONIC AIR VELOCITY SENSOR, SUPPLY DUCT TEMPERATURE SENSOR

\*CAPACITIES BASED ON 18°C DISCHARGE AIR TEMPERATURE @ -22°C AMBIENT AIR TEMPERATURE\*

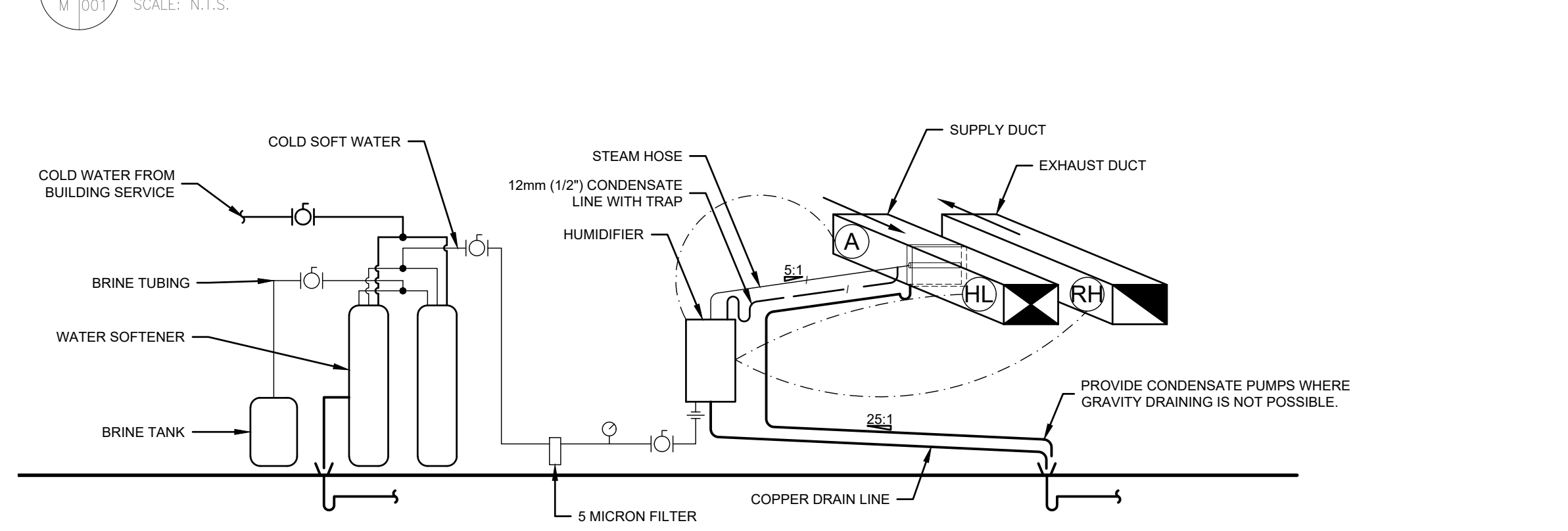
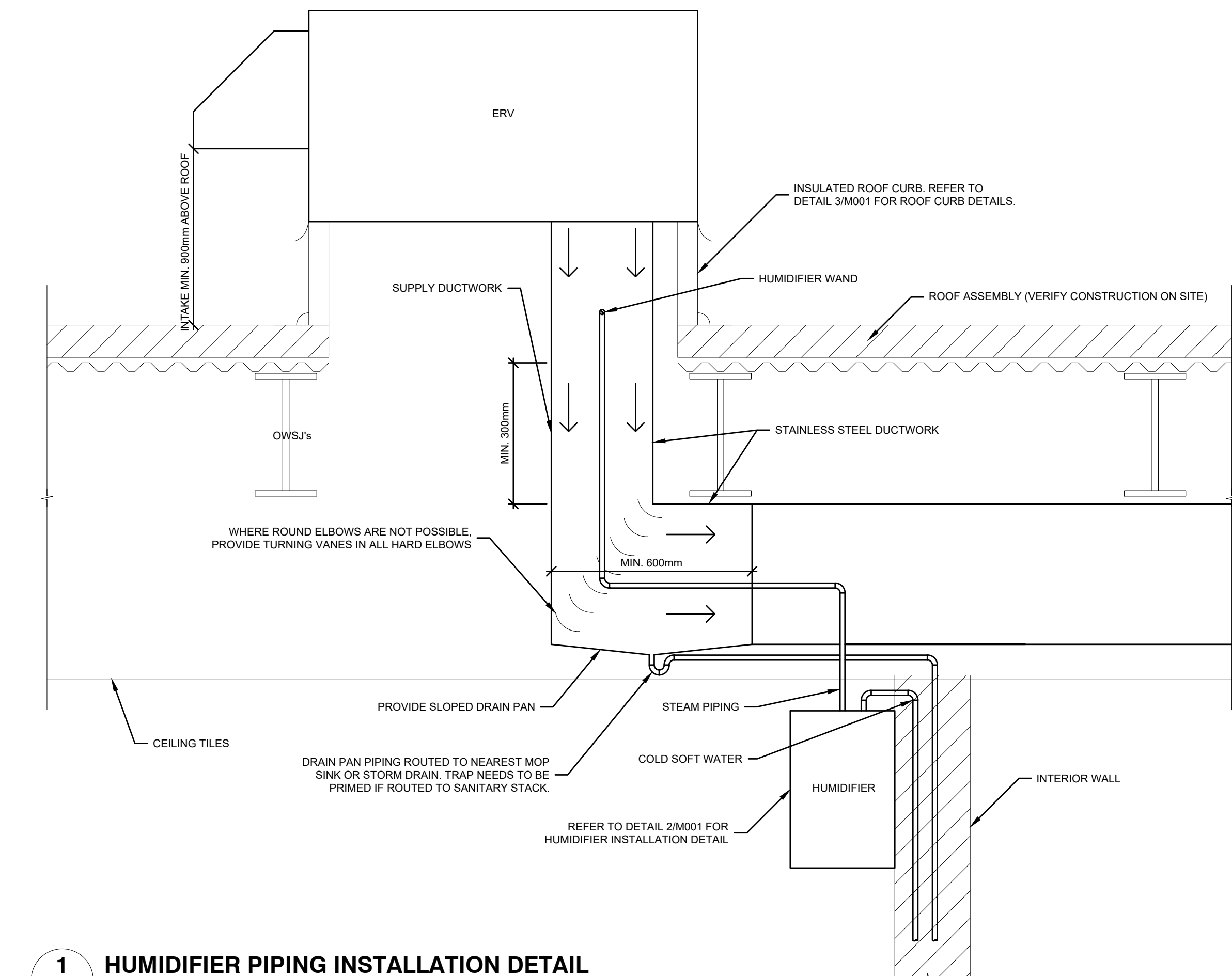
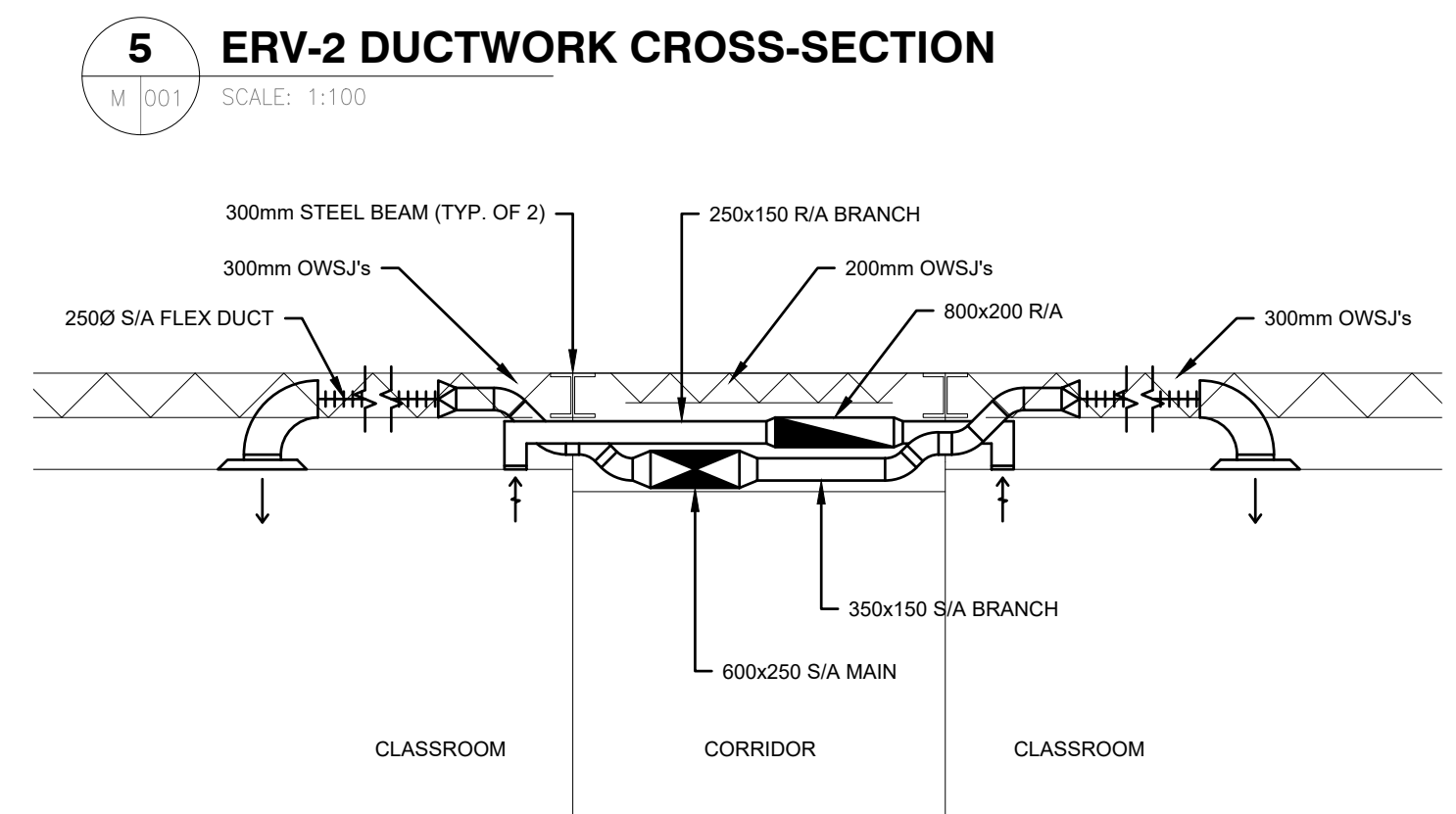
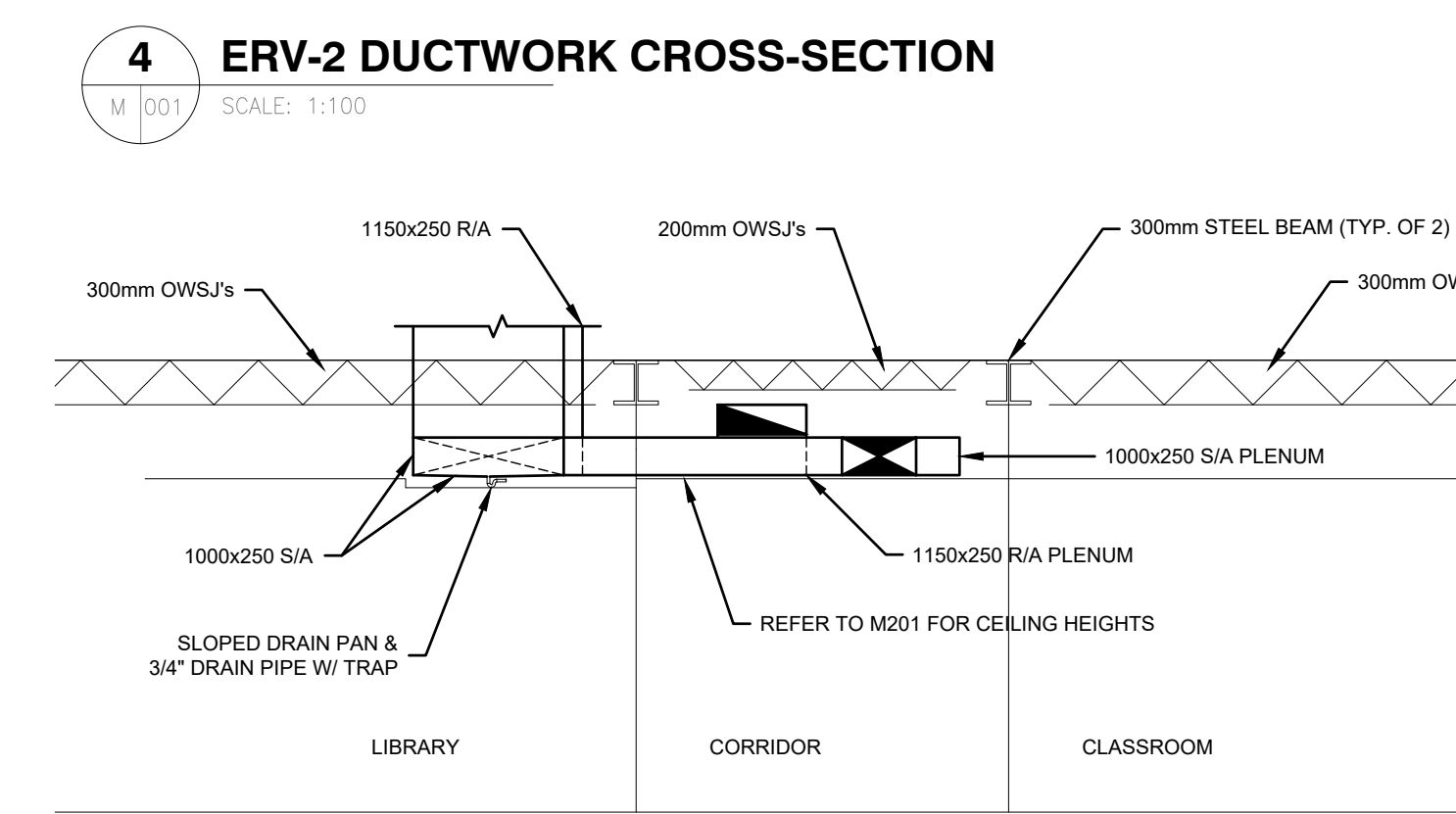
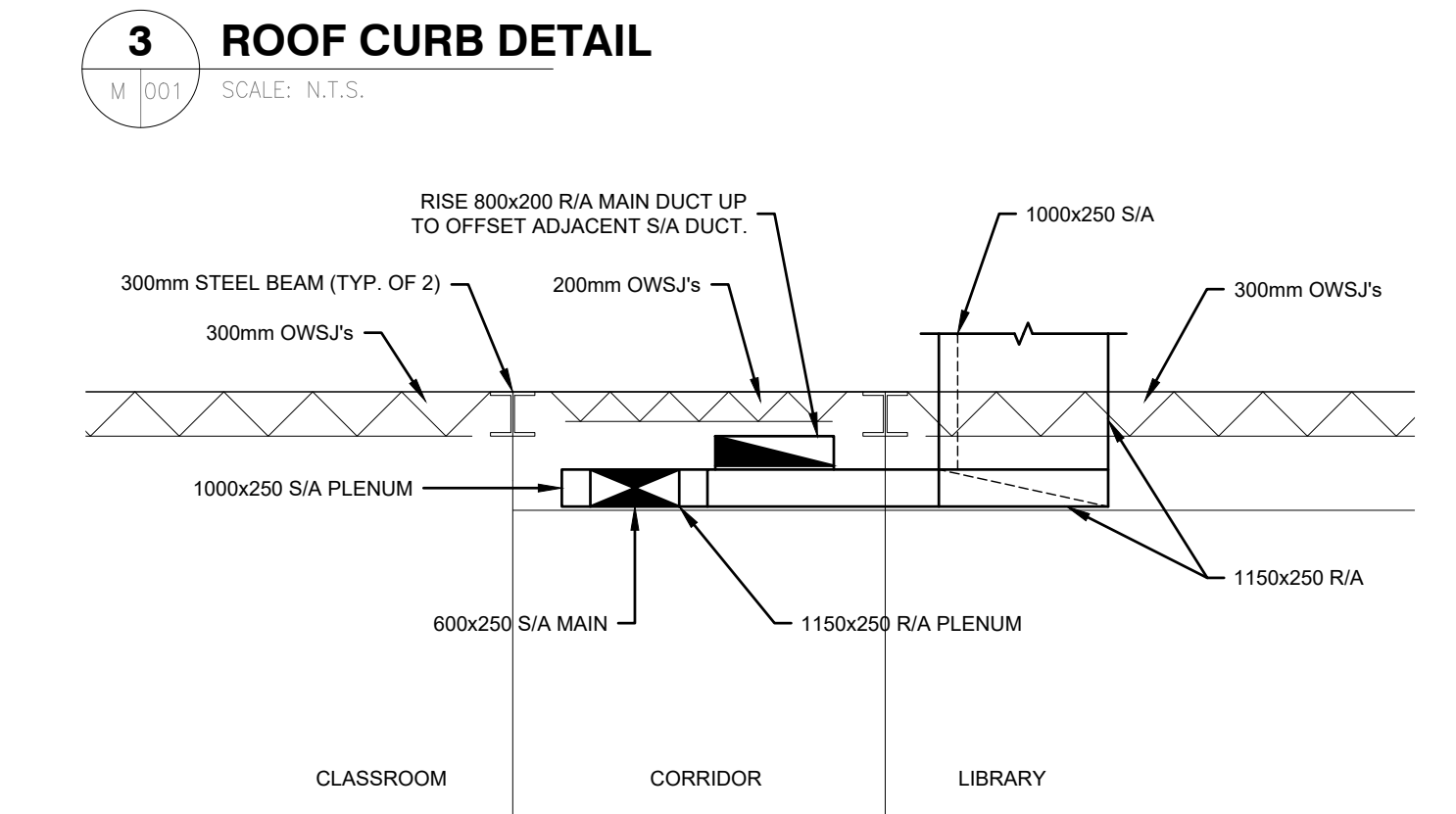
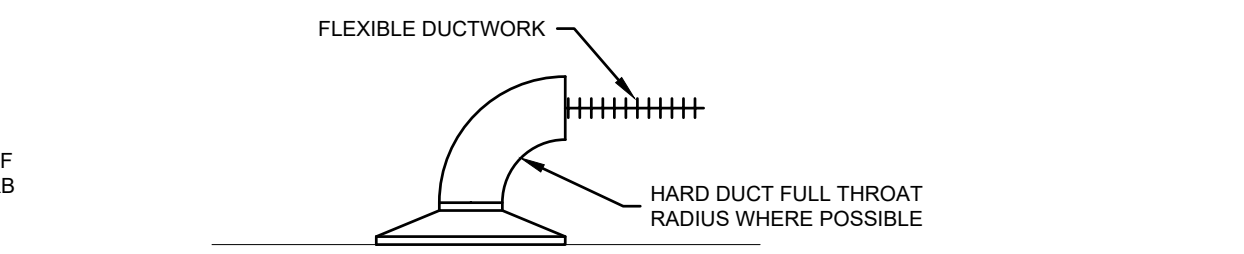
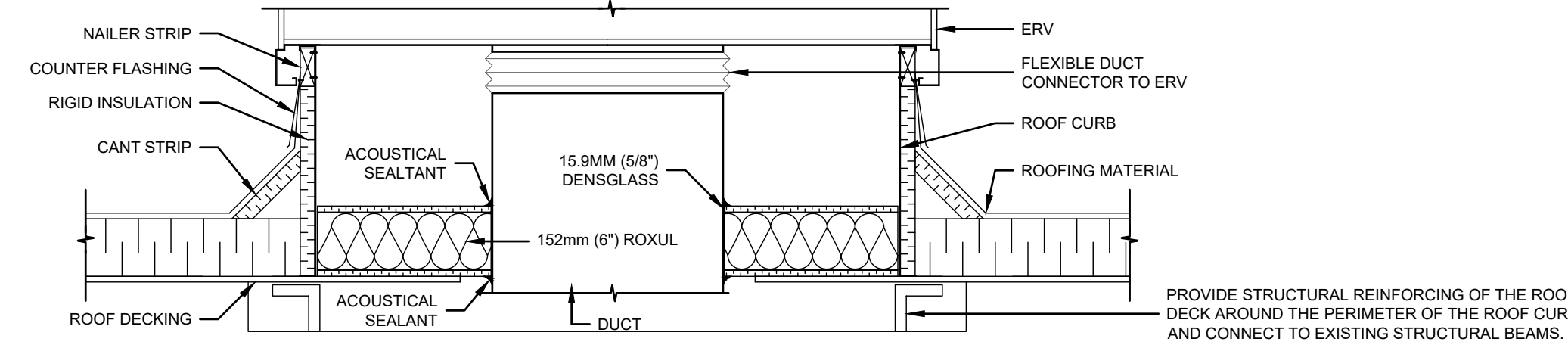
HUMIDIFIER SCHEDULE											
TAG	MAKE	MODEL	OUTPUT (KG/HR)	POWER			AIRSIDE			PHYSICAL	
				VOLTAGE	DEMAND	DISTRIBUTION	ABSORPTION DISTANCE (MM)	EAT (°C)	AIRFLOW (L/S)	SIZE (WxDxH-MM)	WEIGHT (KG)
H-1	DRISTEEM	RTS RX-18-1	6.8	208V/3	6.0 KW	DUCT S.A.M.	225	10.0	1250	410x620x630	64.0
H-2	DRISTEEM	RTS RX-18-1	5.7	208V/3	6.0 KW	DUCT S.A.M.	225	10.0	1050	410x620x630	64.0

\*DUCT CONDITIONS FOR WAND: 11.0°C, 45% RH\*

GRILLES, REGISTERS AND DIFFUSERS SCHEDULE						
TAG	MAKE	MODEL	MODULE SIZE (MM)	NECK SIZE	MOUNTING	OPTIONS
S-2	KRUEGER	80	150x150	N/A	CEILING	-
S-3	KRUEGER	PLQ	300x300	150	WALL	-
S-4	KRUEGER	PLQ	600x600	250	CEILING	-
R-1	KRUEGER	EGC5	250x150	N/A	WALL/CEILING	REFER TO DRAWINGS FOR WALL/CEILING MOUNT LOCATIONS.
R-2	KRUEGER	EGC5	150x150	N/A	WALL/CEILING	REFER TO DRAWINGS FOR WALL/CEILING MOUNT LOCATIONS.
R-3	KRUEGER	EGC5	250x250	N/A	CEILING	-

WATER SOFTENER SCHEDULE						
TAG	MAKE	MODEL	CRITICAL FLOW (LPM)	MINERAL TANK		BRINE TANK
				QUANTITY	RESIN VOLUME (CU.L)	DIMENSIONS (DIA.xH-MM)
WS-1	CANATURE	85TA-23	14.4	2	20 (EACH)	200x1120 480x875

PUMP SCHEDULE						
TAG	SERVICE	MAKE	MODEL	HEAD (KPa)	FLOW (L/S)	REMARKS



W-1 WALL ASSEMBLY:  
- 5/8" TYPE X GWB  
- 4" C-H STEEL STUDS 20 GA. @ 24" C/C  
- 3" ROXUL S&S  
- 1" TYPE X GYPSUM LINER PANEL

LEGEND	
	EXISTING EQUIPMENT/DUCTWORK
	EXISTING TO BE REMOVED
	NEW EQUIPMENT/DUCTWORK
	COLD SOFT WATER
	HUMIDIFICATION STEAM PIPING
	CONTROL WIRING
	HUMIDIFIER DRAIN PIPING
	AIRFLOW SWITCH
	HIGH-LIMIT SENSOR
	RELATIVE HUMIDITY SENSOR
	PUMP
	BALL VALVE
	PRESSURE GAUGE
	UNION
	FIRE DAMPER
	MANUAL BALANCING DAMPER
	BACK DRAFT DAMPER
	TURNING VANES
	LITERS PER SECOND
	GRILLE DESIGNATION AND SIZE
	SUPPLY AIR GRILLE OR DIFFUSER
	RETURN OR EXHAUST AIR GRILLE
	CONNECT TO EXISTING
	ACOUSTICAL DUCT INSULATION

**Prince Edward Island**  
CANADA  
Transportation and Infrastructure  
PO Box 2000  
Charlottetown  
Prince Edward Island  
Canada C1A 7N8  
Tel 902 368 5100  
Fax 902 569 0590  
www.princeedwardisland.ca

DATE ISSUED FOR  
2023.02.10 ISSUED FOR REVIEW  
2023.03.09 ISSUED FOR TENDER

CUSTOMER  
PROVINCE OF PRINCE EDWARD ISLAND  
DEPARTMENT OF TRANSPORTATION & INFRASTRUCTURE  
PROJECT  
PARKDALE ELEMENTARY SCHOOL  
VENTILATION UPGRADE  
DTI PROJECT # 430-21043

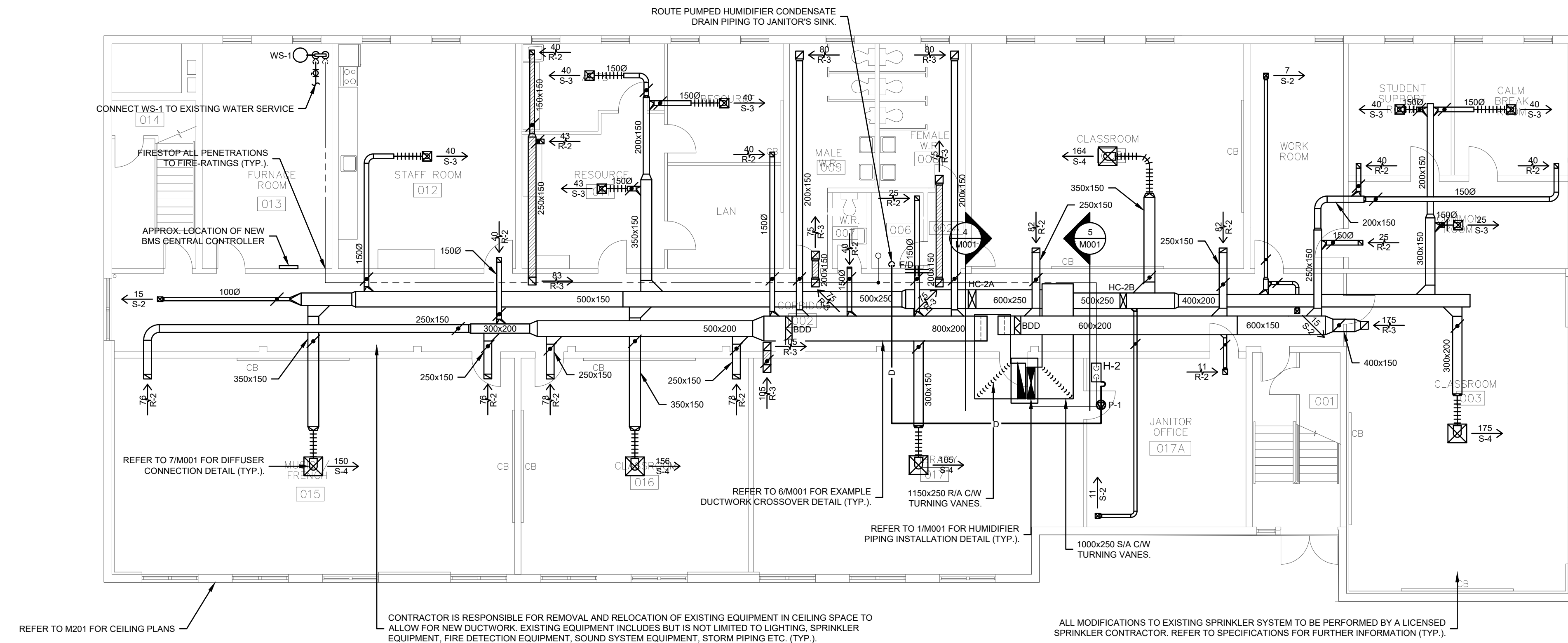
TITLE  
SCHEDULES, DETAILS, & LEGEND

**ORANGE DOOR ENGINEERING**  
49 Water Street, Charlottetown, PE, C1A 1A3  
902.218.1542 dan@orangedoor.org  
www.orangedoor.org

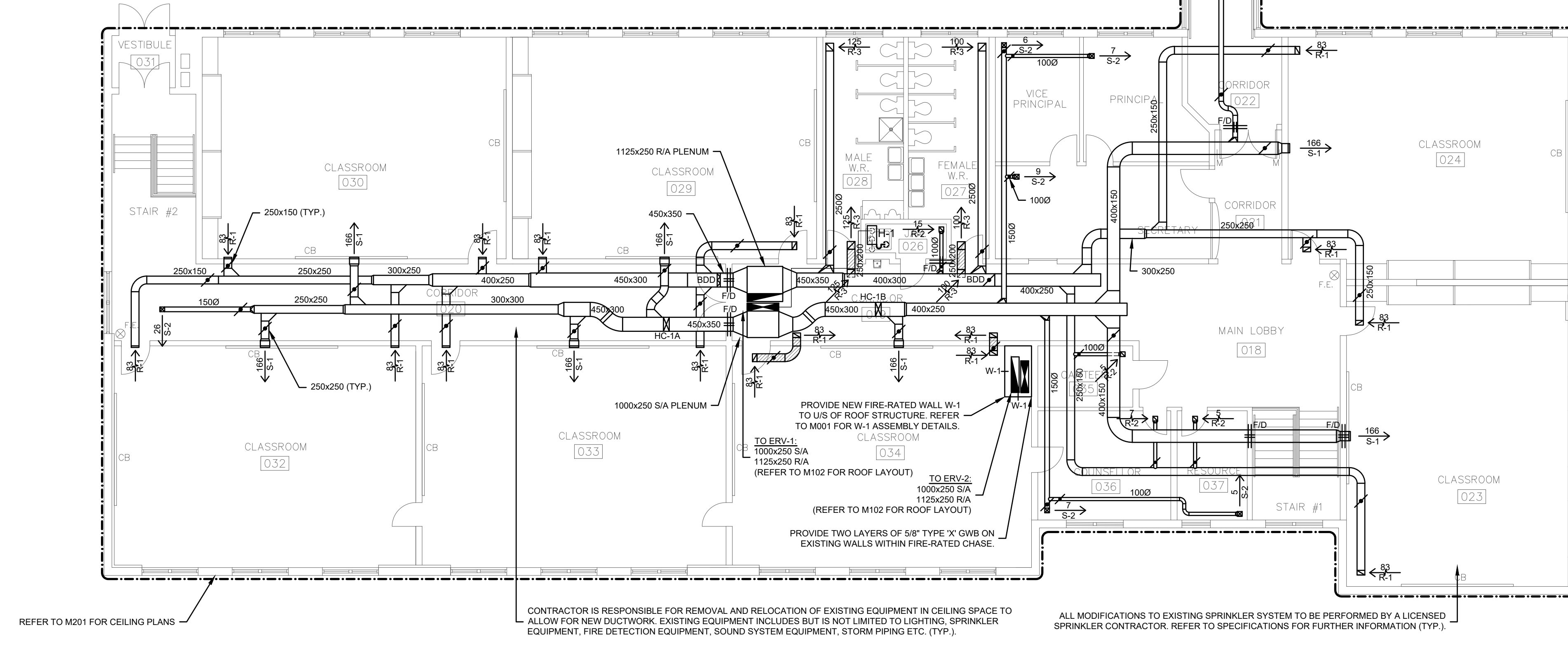
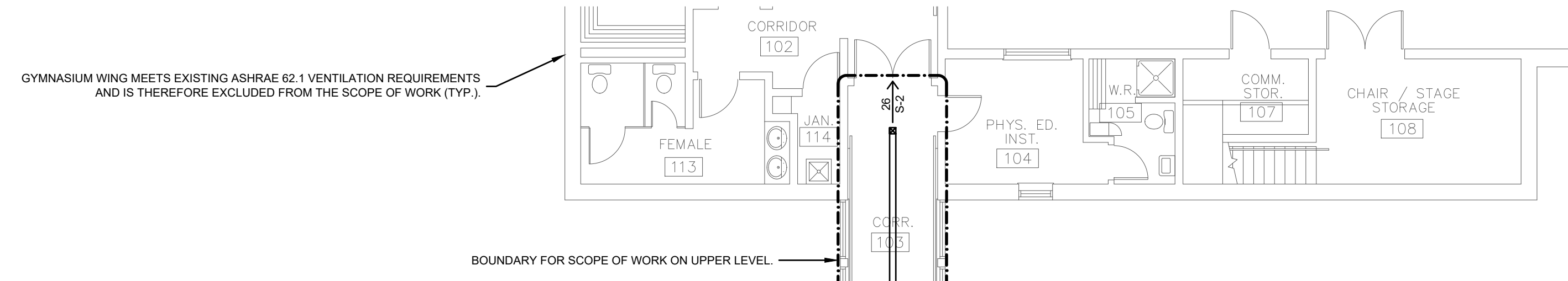
PROFESSIONAL ENGINEER  
Daniel Morris  
2020  
2023.04.06  
DATE  
PROVINCE OF PRINCE EDWARD ISLAND

SCALE: AS INDICATED SHEET #:  
DATE: 2022-11-08  
JOB #: 2021-036  
FILE: 2021-036\_M  
DRAWN BY: DM PROJECT NORTH  
**M001**





**1 LOWER LEVEL - HVAC LAYOUT**  
SCALE: 1:125



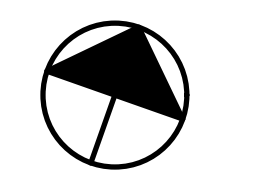
**2 UPPER LEVEL - HVAC LAYOUT**  
SCALE: 1:125

DATE	ISSUED FOR
2023.02.10	ISSUED FOR REVIEW
2023.03.09	ISSUED FOR TENDER

CUSTOMER:  
PROVINCE OF PRINCE EDWARD ISLAND  
DEPARTMENT OF TRANSPORTATION & INFRASTRUCTURE

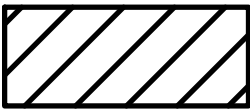
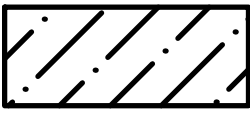
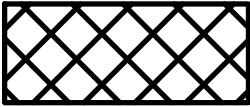
PROJECT:  
PARKDALE ELEMENTARY SCHOOL  
VENTILATION UPGRADE  
DTI PROJECT # 430-21043

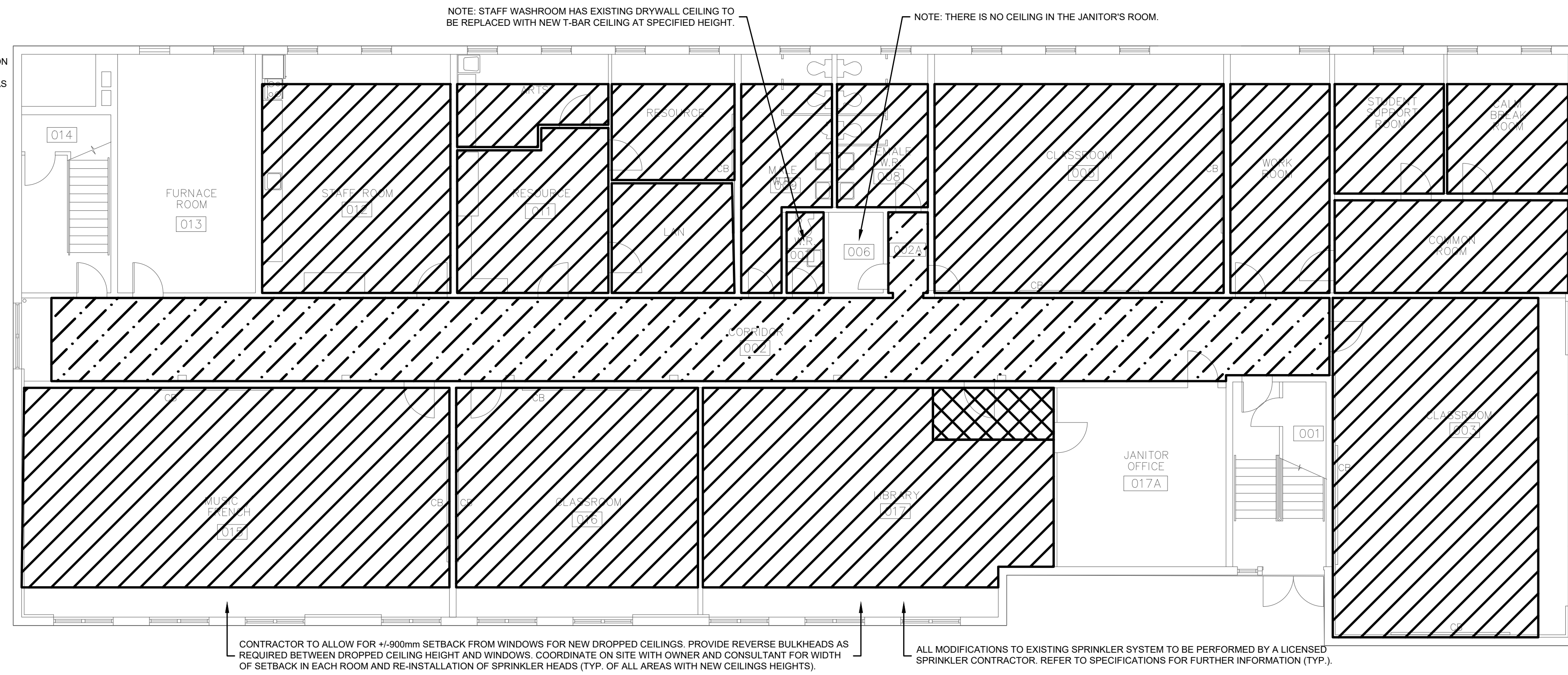
TITLE:  
HVAC LAYOUT



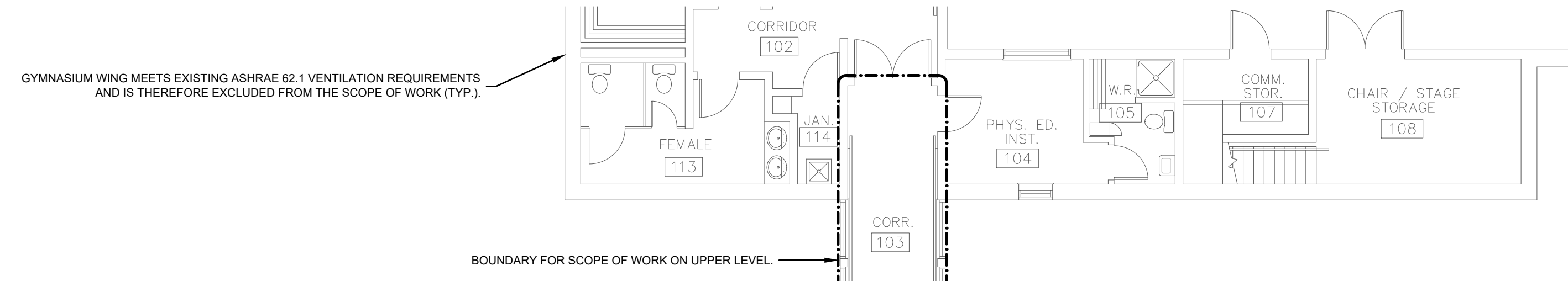
SCALE:	AS INDICATED	SHEET #:	M101
DATE:	2022-11-08		
JOB #:	2021-036		
FILE:	2021-036_M		
DRAWN BY:	DM		

- LOWER LEVEL GENERAL NOTES:**
- REFER TO M201 FOR NEW CEILING HEIGHT REQUIREMENTS ON THIS LEVEL.
  - CONTRACTOR IS RESPONSIBLE FOR THE REMOVAL AND REPLACEMENT/RE-INSTALLATION OF ALL CEILINGS, LIGHTING, SPRINKLER EQUIPMENT, FIRE DETECTION EQUIPMENT, AND SOUND SYSTEM EQUIPMENT TO ALLOW FOR INSTALLATION OF NEW HVAC EQUIPMENT AS REQUIRED.
  - CONTRACTOR SHALL ALLOW FOR INSTALLATION/RE-INSTALLATION OF BULKHEADS AROUND WINDOWS WHERE REQUIRED FOR NEW DROPPED CEILING HEIGHTS.
  - AT THE DISCRETION OF THE OWNER, CEILING TILES TO BE RE-USED WHERE FEASIBLE.
  - REFER TO CONTRACT SPECIFICATIONS FOR FURTHER INFORMATION ON NEW CEILINGS.

-  NEW CEILING HEIGHT = 2400mm FROM FFL
-  NEW CEILING HEIGHT = 2250mm FROM FFL
-  NEW CEILING HEIGHT = 2190mm FROM FFL

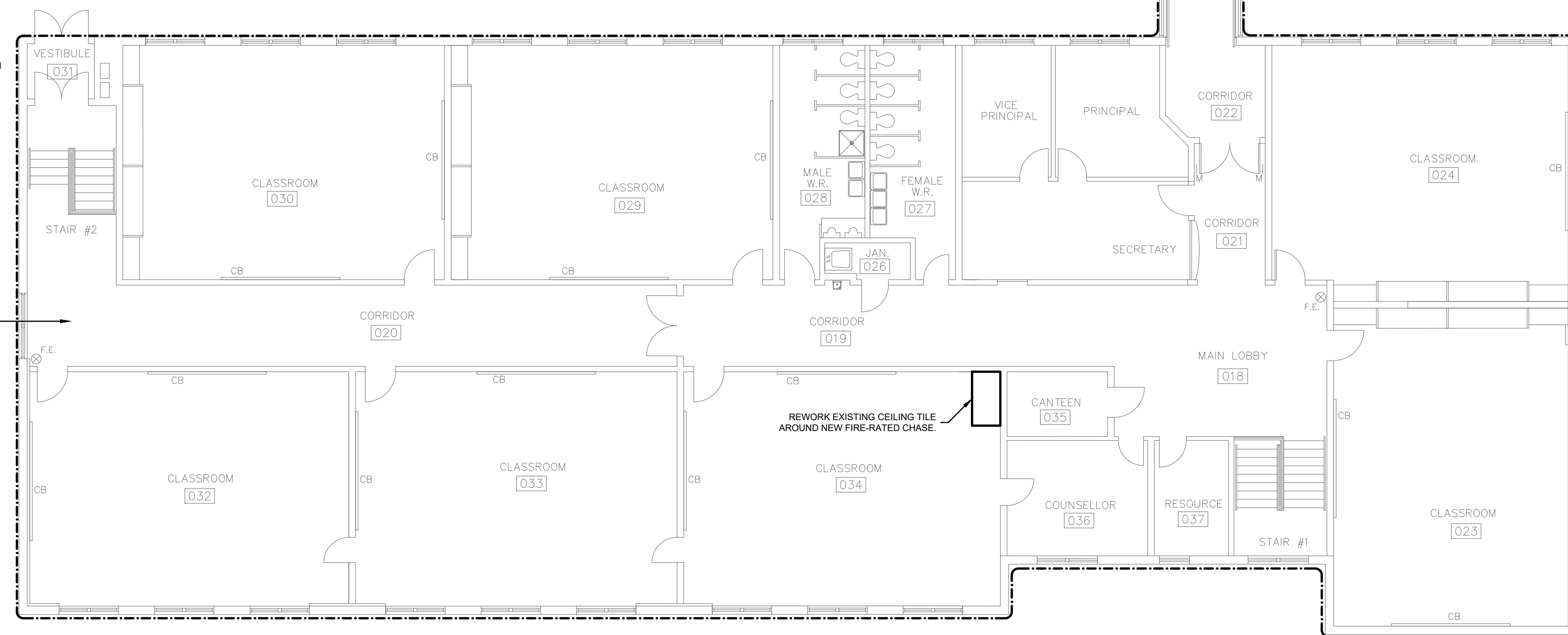


**1 LOWER LEVEL - CEILING PLAN**  
SCALE: 1:125



- UPPER LEVEL GENERAL NOTES:**
- CEILING HEIGHTS ARE NOT REQUIRED TO CHANGE ON THIS LEVEL.
  - CONTRACTOR IS RESPONSIBLE FOR THE REMOVAL AND REPLACEMENT/RE-INSTALLATION OF ALL CEILINGS, LIGHTING, SPRINKLER EQUIPMENT, FIRE DETECTION EQUIPMENT, AND SOUND SYSTEM EQUIPMENT TO ALLOW FOR INSTALLATION OF NEW HVAC EQUIPMENT AS REQUIRED.
  - AT THE DISCRETION OF THE OWNER, CEILING TILES TO BE RE-USED WHERE FEASIBLE.

ALL MODIFICATIONS TO EXISTING SPRINKLER SYSTEM TO BE PERFORMED BY A LICENSED SPRINKLER CONTRACTOR. REFER TO SPECIFICATIONS FOR FURTHER INFORMATION (TYP.).



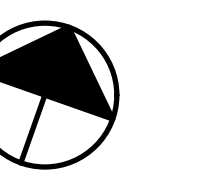
**2 UPPER LEVEL - CEILING PLAN**  
SCALE: 1:125

DATE	ISSUED FOR
2023.02.10	ISSUED FOR REVIEW
2023.03.09	ISSUED FOR TENDER

CUSTOMER:  
PROVINCE OF PRINCE EDWARD ISLAND  
DEPARTMENT OF TRANSPORTATION & INFRASTRUCTURE

PROJECT:  
PARKDALE ELEMENTARY SCHOOL  
VENTILATION UPGRADE  
DTI PROJECT # 430-21043

TITLE:  
CEILING LAYOUT



SCALE: AS INDICATED  
DATE: 2022-11-08  
JOB #: 2021-036  
FILE: 2021-036\_M  
DRAWN BY: DM

SHEET #:  
**M201**





Transportation and Infrastructure

Tel 902 368 5100  
Fax 902 569 0590  
www.princeedwardisland.ca

PO Box 2000  
Charlottetown  
Prince Edward Island  
Canada C1A 7N8

DATE	ISSUED FOR
2023.02.10	ISSUED FOR REVIEW
2023.03.09	ISSUED FOR TENDER

CUSTOMER:  
PROVINCE OF PRINCE EDWARD ISLAND  
DEPARTMENT OF TRANSPORTATION &  
INFRASTRUCTURE

PROJECT:  
PARKDALE ELEMENTARY SCHOOL  
VENTILATION UPGRADE  
DTI PROJECT # 430-21043

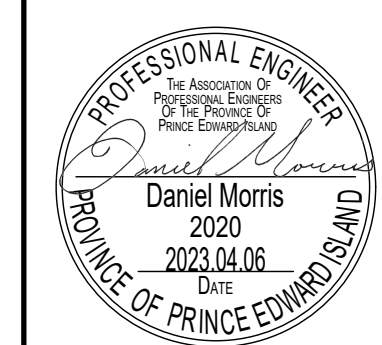
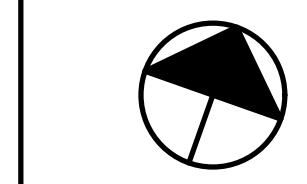
TITLE:  
ROOF HVAC LAYOUT

**ORANGE DOOR**  
ENGINEERING

49 Water Street, Charlottetown PE, C1A 1A3  
902.218.1542 dan@orangedoor.org  
www.orangedoor.org

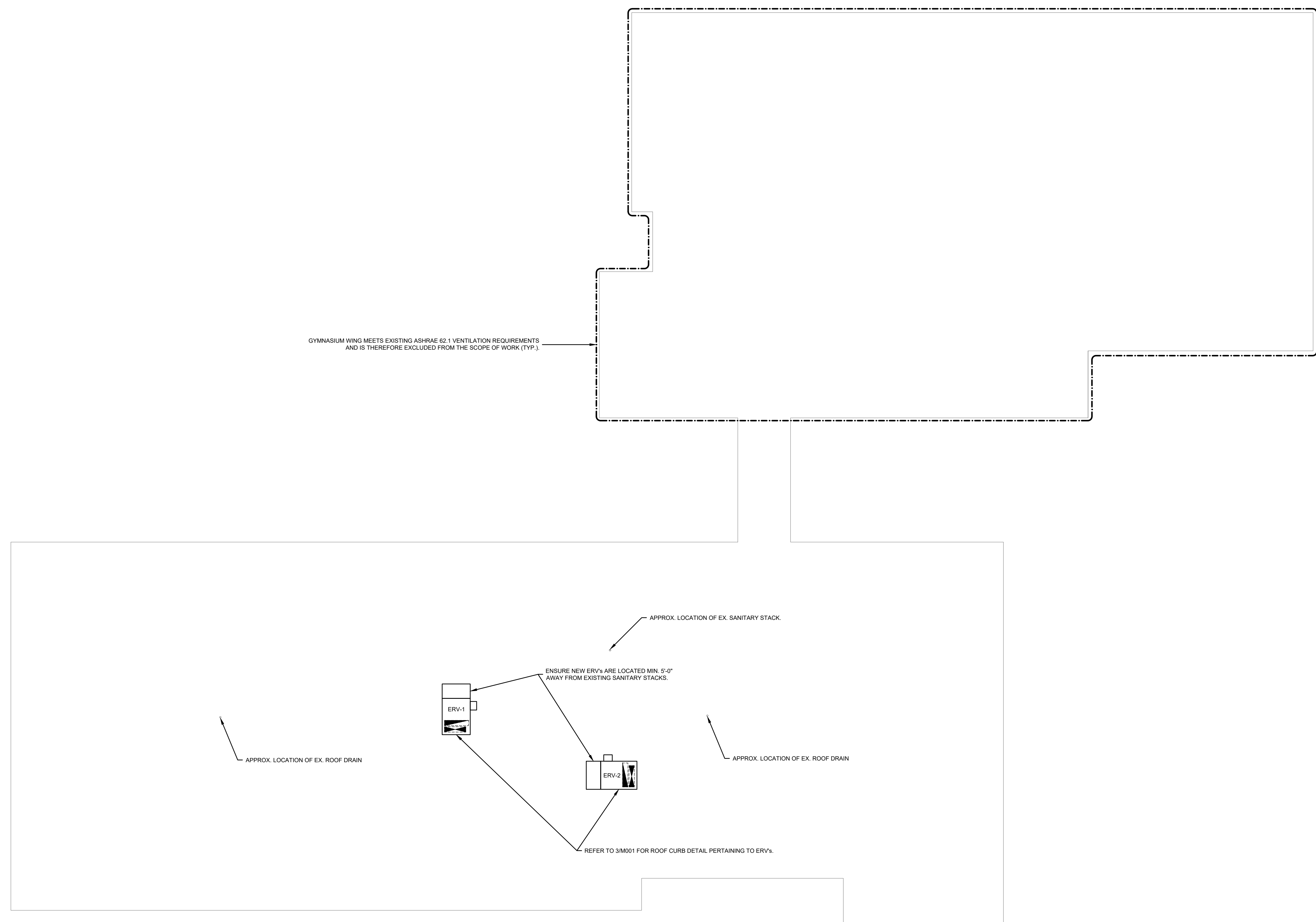
PROFESSIONAL ENGINEER  
Daniel Morris  
2020  
2023.04.06  
DATE

PROVINCE OF PRINCE EDWARD ISLAND

SCALE: AS INDICATED SHEET #:  
DATE: 2022-11-08  
JOB #: 2021-036  
FILE: 2021-036\_M  
DRAWN BY: DM

M102



**1 ROOF LEVEL - HVAC LAYOUT**  
SCALE: 1:125